



GMT MONTHLY MEMBERSHIP PROGRESS REPORT

Results as of: 4/30/2019

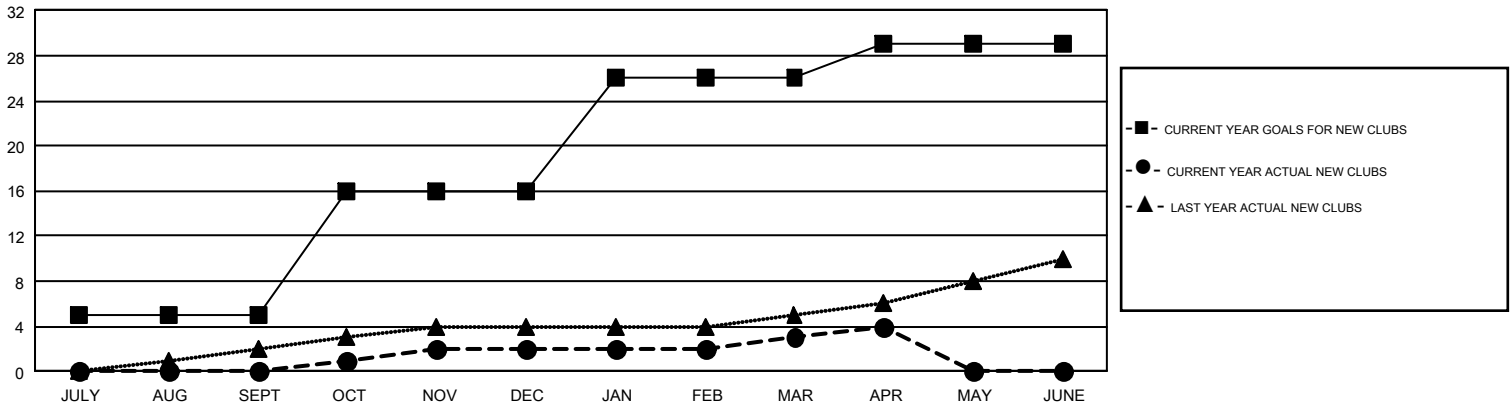
GMT Constitutional Area 1, Group D

GMT: OPEN

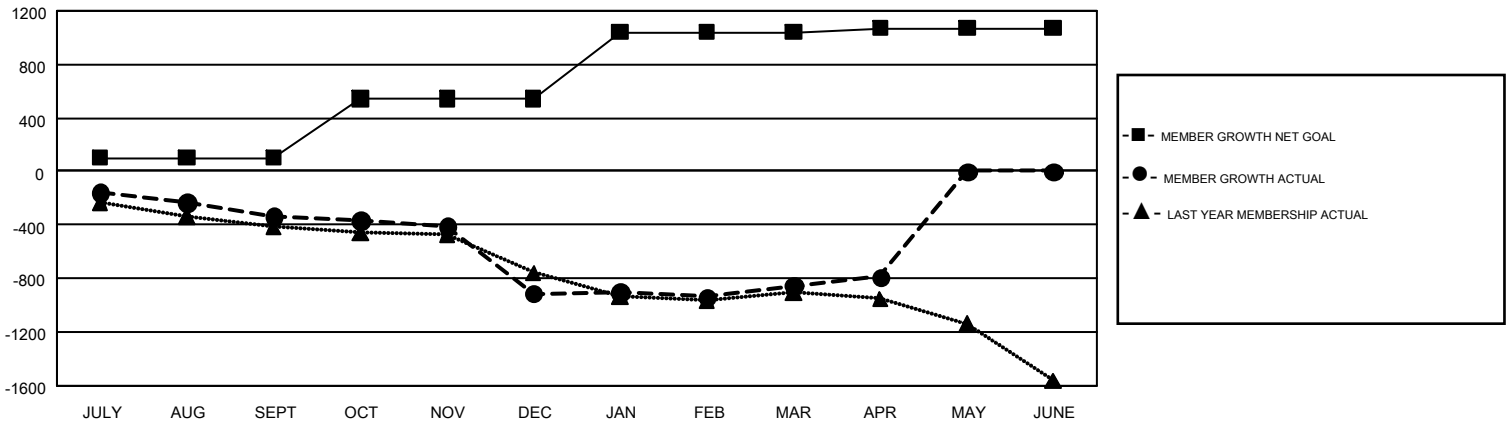
REPORT DOES NOT INCLUDE CLUBS IN UNDISTRICTED AREAS.

Clubs				Members			
RESULTS FOR 2018-2019				RESULTS FOR 2018-2019			
QUARTER	NEW CLUB GOAL	NEW CLUBS	DROPPED CLUBS	QUARTER	MEMBER GROWTH NET GOAL	MEMBER GROWTH ACTUAL	DROPPED MEMBERS ACTUAL (including transfers)
JULY/AUG/SEPT	5	0	12	JULY/AUG/SEPT	101	806	1,024
OCT/NOV/DEC	11	2	7	OCT/NOV/DEC	442	985	1,444
JAN/FEB/MAR	10	1	6	JAN/FEB/MAR	498	971	820
APR/MAY/JUNE	3	1	1	APR/MAY/JUNE	29	375	284

GOALS AND ACTUAL NEW CLUBS CUMULATIVE



GOALS AND ACTUAL MEMBERS CUMULATIVE



DROPPED CLUBS: 26	900 CLUBS OF 1,515 ADDED 1 OR MORE NEW MEMBERS	GENDER DISTRIBUTION
DROPPED MEMBERS	CLICK HERE FOR CUMULATIVE MEMBERSHIP DATA	MALE 34,408 (73.39%)
DECEASED 530		FEMALE 12,478 (26.61%)
CLUB CANCELLED 114		TOTAL FAMILY UNIT MEMBERS 9,286
OTHER 2,926		FAMILY MEMBERS PAYING HALF DUES 4,707
TOTAL 3,570		